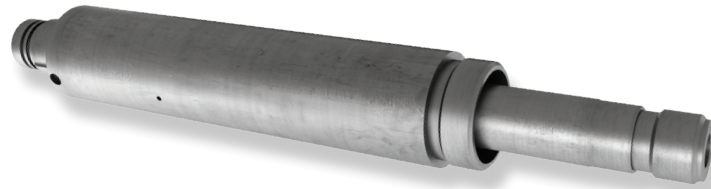




RP limited use, frac-plug setting tools

Pre-assembled tools eliminate wellsite redressing errors



The RP20 limited use, pre-assembled setting tools are patented setting tools manufactured by Repeat Precision. Just remove the assembly from the shipping carton, install a plug using a Baker 20 adapter kit (provided by the plug vendor), and insert a power charge.* After the tool strokes to set the plug, it automatically releases pressure before it is retrieved. At surface, simply remove the setting tool from the running string and set it aside for Repeat Precision personnel to pick up and send to the manufacturing facility for redress.

In an effort to decrease the amount of environmental waste created by a single-use setting tool, Repeat Precision is salvaging each component of the RP20 setting tool to be reused downhole. Each component is subject to rigorous inspection at Repeat Precision’s manufacturing facility and only re-qualified according to strict quality standards.

For every 200 stages an RP Limited Use Setting tool is used instead of a single-use disposable setting tool, the following savings from greenhouse gas emissions are realized from:

1.3
passenger cars
driven for 1 year



15,015
miles driven
by average
passenger car



Sales & Operations Process

- An order is placed to Repeat Precision for an upcoming well/pad
- Repeat Precision delivers the setting tools directly to the wellsite and retrieves the tools at the end of the job
- The setting tools are then sent back to the Repeat Precision manufacturing facility for disassembly, cleaning, QA/QC, and rebuild
- Each component of the setting tool is serialized, tracked, and then recycled after a predetermined number of runs

Features and Benefits

- Environmentally conscious; decrease waste material by 80%
- No pressure discharge at surface; safer and eliminates power charge residue in atmosphere
- 6,000 lbs of anti-preset protection built into the setting tool
- The compact, lightweight tool can be handled by one person
- The short length allows additional guns for each stage
- All component inspection and redress performed at the Repeat Precision manufacturing facility

	Casing size in.	Maximum setting force lbf	Maximum power charge pressure psi**	Outside diameter in.	Length in.	Stroke in.	Assembly weight lb	Part number
RP20	5.50	55,000	21,000	3.81	27.38	5.30	55	0024842

*Contact Repeat Precision for power charge options. **Maximum power charge pressure at maximum setting force. Wireline connections to setting tool must contain this pressure to set the plug.

Gabi Clark
Product Line Manager
936.333.3293

Andrew Gammon
Permian Region
512.964.7799

Gilbert Rodriguez
Permian Region
432.853.6637

Adam Curry
Appalachia Region
724.882.9816

Todd Draeger
Rocky Mountains Region
970.380.8633