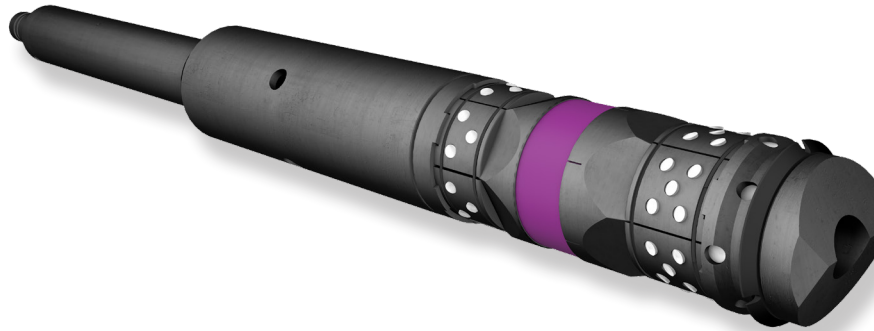


# PurpleSeal Express

Single-use frac-plug deployment system



## *Preassembled, run-ready, and disposable*

The exclusive PurpleSeal Express™ system streamlines frac-plug installation and eliminates wellsite redressing errors that cause costly presets and soft-sets. The system combines a PurpleSeal™ PS-C frac plug with our exclusive version of Diamondback Industries' patented SS Disposable Setting Tool®. The plug and setting tool are preassembled with connections thread-locked or torque-tightened to prevent back-off. Just remove the assembly from the shipping carton, insert a Forcellant™ power charge, install a firing head/igniter, and make the assembly up to the gun string. No shear screws or set screws to install, no connections to tighten, no oil to add. After the tool strokes to set the frac plug, it automatically releases pressure before it is retrieved. At the surface, simply remove the setting tool from the gun string and set it aside for recycling. No disassembly, no inspection, no redressing.

### Features and Benefits

- Preassembly at the factory eliminates wellsite redressing errors
- Anti-preset shear screws in the setting tool prevent premature plug setting
- There is no pressure discharge at surface
- The compact, lightweight assembly can be handled by one person
- The short length allows additional guns for each stage

Casing size in.	Casing weight lb/ft	Plug pressure rating psi	Plug OD in.	Plug ID in.	Plug length in.	Assembly length in.	Assembly weight lb	Setting force of plug lbf	PurpleSeal Express part number
4.50	11.6	9,000	3.600	1.000	13.33	42.83	44	20,000*	0035001
4.50	13.5–15.1	10,000	3.600	1.000	13.33	42.83	44	20,000*	0035001
5.00	18.0	10,000	3.850	1.000	15.63	45.13	48	20,000*	0035000
5.50	17.0	8,000	4.380	1.250	14.53	43.78	53	25,000*	0034629
5.50	20.0–23.0	10,000	4.380	1.250	14.53	43.78	53	25,000*	0034629

Contact Repeat Precision for power charge options. \*Maximum capacity of these setting tools is 30,000 lbf. \*



**REPEAT PRECISION**

[repeatprecision.com](http://repeatprecision.com)

**Clint Mickey**  
Product Line Manager  
210.243.5594

**John Billings**  
Permian Basin  
940.249.2219

**Adam Curry**  
Appalachia Region  
724.882.9816

**Todd Draeger**  
Rocky Mountains Region  
970.380.8633